



## Westmark Tower, London, W2 1EQ

**£4,900 Per Month**



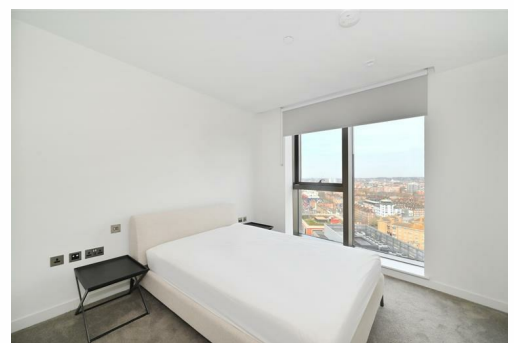
Beautiful two-bedroom, two-bathroom apartment situated on the 16th floor of the highly sought after Westmark Tower. Offering panoramic views towards central London, a luxury specification and use of five star residents facilities.

In Zone 1 London and moments from the prestigious neighbourhoods of Marylebone and Little Venice, West End Gate comprises a range of apartments situated around private landscaped gardens. Residents will enjoy first-class facilities including a 24 hour concierge, private cinema, residents dining, pool, gym & spa.

At 30 stories high, Westmark Tower is the flagship building within the development and offers dramatic views towards, Regents Park, The City, Hyde Park & beyond.

Apartment is fully furnished.

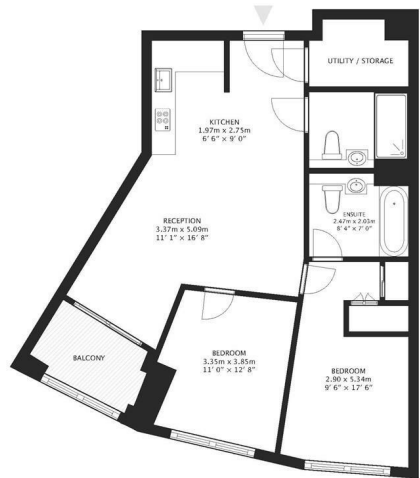
- TWO BEDROOM APARTMENT
- PRIVATE BALCONY
- RESIDENTS GYM
- RESIDENTS PRIVATE DINING ROOM
- MODERN BUILDING
- TWO BATHROOMS
- 24-HOUR CONCIERGE
- RESIDENTS SWIMMING POOL
- RESIDENTS CINEMA ROOM
- Council Tax Band: F



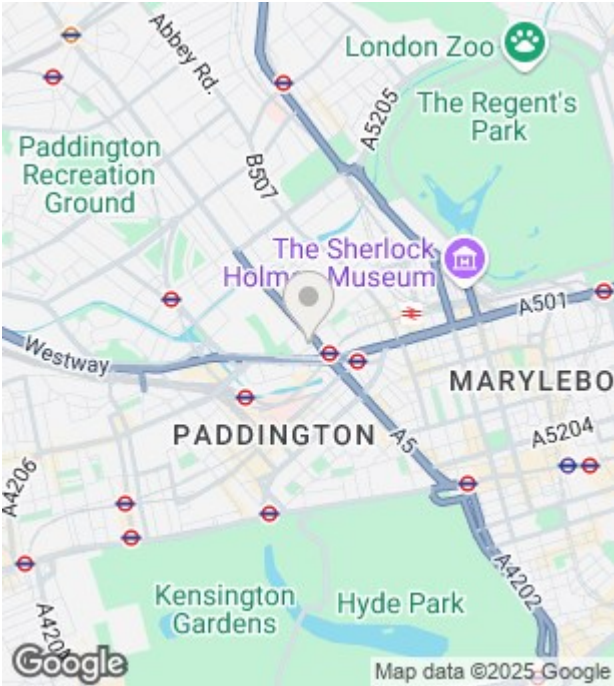





Westmark Tower, W2  
APPROX. GROSS INTERNAL FLOOR AREA: 798 sq ft / 74.1 sq m  
(Excluding balcony)



FOR ILLUSTRATIVE PURPOSES ONLY NOT TO SCALE.  
All measurements are given within a tolerance of +/- 1%. No responsibility is taken for any errors, omissions, their omission or use of data shown.  
© 2025 Grange Holdings. www.grangelondon.com



Energy Efficiency Rating		
	Current	Potential
Very energy efficient - lower running costs		
(92 plus) A	87	87
(81-91) B		
(69-80) C		
(55-68) D		
(39-54) E		
(21-38) F		
(1-20) G		
Not energy efficient - higher running costs		
England & Wales		EU Directive 2002/91/EC 

Environmental Impact (CO <sub>2</sub> ) Rating		
	Current	Potential
Very environmentally friendly - lower CO <sub>2</sub> emissions		
(92 plus) A		
(81-91) B		
(69-80) C		
(55-68) D		
(39-54) E		
(21-38) F		
(1-20) G		
Not environmentally friendly - higher CO <sub>2</sub> emissions		
England & Wales		EU Directive 2002/91/EC

Unit 10 Paddington Works 8 Hermitage Street, London, W2 1BE  
Tel: +44(0)20 3019 6151 Email: [lettings@grange.london](mailto:lettings@grange.london)